

So... You're Applying for a GEMSSTAR

Susan Zieman, M.D., Ph.D.

Medical Officer, Geriatrics Branch

Division of Geriatrics and Clinical Gerontology, NIA, NIH

GEMSSTAR Webinar 10/15/20

Title	Name	Division
The Big Picture: NIA/NIH, Who's Who	Sue Zieman	Geriatrics and Clinical Gerontology
Tips on Specific Aims and Resubmissions	Janine Simmons	Behavioral and Social Research
Crafting a PDP	Basil Eldadah	Geriatrics and Clinical Gerontology
The Enigmatic Review Process	Isis Mikhail	Extramural Activities
Research Resources and Tools	Molly Wagster	Neuroscience
Working with your PO	Sue Zieman	Geriatrics and Clinical Gerontology

About Today's Webinar:

- ▶ **Goal - to provide guidance, tips and resources** for early career investigators applying for the Grants for Early Medical and Surgical Specialists' Transition to Aging Research (GEMSSTAR) **RFA-AG-21-023** RECEIPT DATE: **11/13/20**
 - ▶ **Overview on NIA/NIH and helpful tips**
- ▶ Sponsored by NIA, the **Clin-STAR Coordinating Center** (AFAR) and the **American Geriatrics Society** (AGS)
- ▶ Session will be recorded and archived
- ▶ Please send questions through the chat and we will address them during the Q&A sessions
- ▶ Please visit the **GEMSSTAR FAQ Website**
- ▶ Please send all communications to NIA about GEMSSTAR to the GEMSSTAR Email (**NIAGEMSSTAR@mail.nih.gov**)
- ▶ Thank you for attending!

Overview of the NIH

Who are we?

- ▶ NIH is made up of 27 institutes and centers (ICs)
 - ▶ Most have Intramural and Extramural Programs
- ▶ ICs award >80% of the NIH budget each year
 - ▶ Minimal budget to support staff
- ▶ Each IC has a budget and a director, and typically their own review for early career/training awards and RFA (like GEMSSTAR)
- ▶ The Center for Scientific Research oversees triage and review of most applications



Know Your Funder!

NIA's MISSION

- ▶ Support and conduct genetic, biological, clinical, behavioral, social, and economic **research** on aging.
 - ▶ **Aging processes**, *How do aging-associated changes in physiology affect predisposition to, and outcome from, specific diseases and conditions and their combination? (Across the entire lifespan)*
 - ▶ **Conditions of aging**, *What are the optimal strategies for diagnosing and managing age-related diseases and conditions along with comorbidities?*
 - ▶ **Needs/care of aged** *How do entities such as comorbidity, polypharmacy, and geriatric syndromes (e.g. frailty, sarcopenia, vascular stiffness) affect the care and procedural risk of older adults?*
- ▶ Foster the **development** of research and clinician scientists in aging.
- ▶ Provide research **resources**.
- ▶ **Disseminate information** about aging and advances in research **to the public**, health care professionals, and the scientific community, among a variety of audiences.

<https://www.nia.nih.gov/about/mission>

The National Institute on Aging:

Strategic Directions for Research, 2020-2025

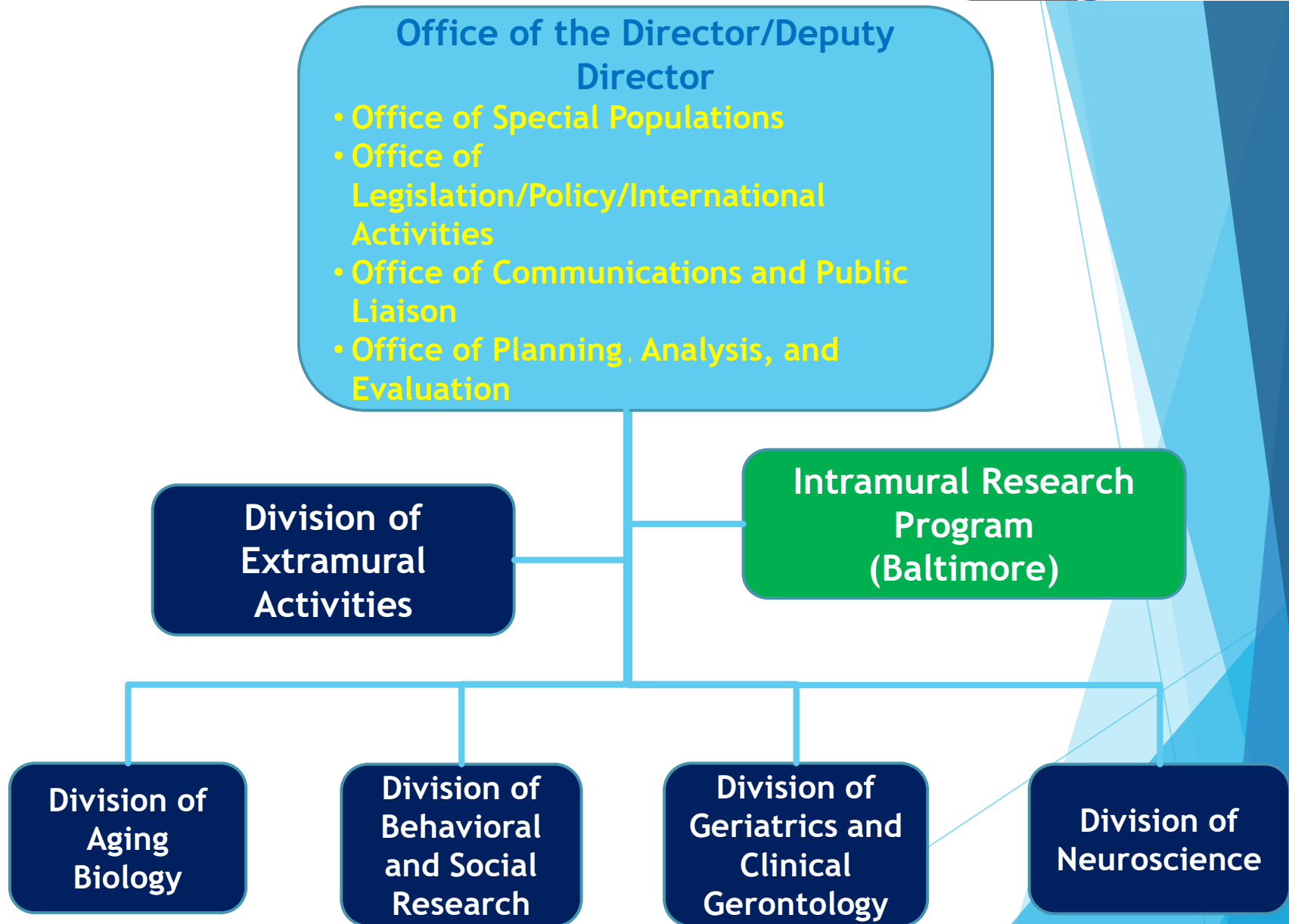


National Institute on Aging

ONLINE ONLY

<https://www.nia.nih.gov/about/aging-strategic-directions-research>

NIA Organizational Structure



Who's Who and What do We Do?

WHO	WHAT	WHEN
Program Officers	Create, advise, promote, administer grants. THEY DO NOT PLAY A ROLE IN REVIEW except to listen when we can!! Each PO has a portfolio based on expertise (web). We divide and conquer- SAME ADVICE. Review summary statements with applicant. Participate in U13 conferences. Review progress reports.	BEFORE grant submitted, AFTER summary statement released. Ideas, review aims, ask about mechanisms. When you run into trouble or have Qs. Promote research.
Scientific Review Officer	Set up and run peer review. Release summary statements.	Call after submitted until SS released.
Grant Management Officer	Administer grant funds, request documentation, Just in Time Documents	Questions about budget, grant documents, JIT info.

Ponder Your Current Situation and Your Ideal Journey Ahead.....

- ▶ Ideal Day
- ▶ Research Trajectory
 - ▶ Significance of each part
- ▶ Skill, Training Trajectory
- ▶ Mentoring
- ▶ Resources
- ▶ Know academic currency
- ▶ Know how to say yes and no
- ▶ Reexamine journey frequently and adjust
- ▶ Training, mentorship
- ▶ Protected Time
- ▶ Resources (lab, infrastructure)
- ▶ Realistic Budget/time to perform the RIGHT Study
- ▶ Don't try to play the system, let the system work for you
 - ▶ Don't fit your research into an FOA, find the FOA to fund your research
- ▶ Look for synergy w clinical career, collaboration, leverage resources, multiple funding
- ▶ **Discuss with your mentor, and PO**